



Naval Facilities Engineering Command, Marianas  
 MCAG P&D  
 PSC 455 Box 195  
 FPO AP 96540

**MILITARY RELOCATION TO GUAM AND CNMI  
 PROGRAMMATIC AGREEMENT (PA) MEMO #1**

<b>Project:</b> Revised MILCON Project P-102 Harmon Power Upgrade RC# 2015-0129	<b>Date:</b> April 17, 2017
<b>Project Location:</b> REVISED - Harmon Substation to AAFB Main Station within Existing Easements (Routes 3 and 9 Right of Ways) and Proposed Green Waste Area and Construction Laydown Areas and new APE	<b>Prepared By:</b> NAVFAC Marianas - MCAG P&D

**PROJECT SUMMARY**

The military construction (MILCON) Project P-102 Harmon Power Upgrade (RC # 2015-0129) satisfies the requirement for utilities upgrades to existing Guam infrastructure. This requirement is identified within the 2010 Final Environmental Impact Statement (FEIS) for Guam and CNMI Military Relocation and in Appendix E of the 2011 *Programmatic Agreement among the Department of Defense, the Advisory Council on Historic Preservation, the Guam State Historic Preservation Officer, and the Commonwealth of the Northern Mariana Islands State Historic Preservation Officer Regarding the Military Relocation to the Islands of Guam and Tinian* (2011 PA). This Programmatic Agreement Memorandum (PA Memo) covers the P-102 Project construction activities from Harmon Substation to AAFB Main Station and additional associated areas included within project’s area of potential effect (APE). Accordingly, as per Stipulation V.B., this PA Memo presents information to allow the State Historic Preservation Officer (SHPO) to provide comments on the DoD’s identification and evaluation of historic properties within the project’s APE, as well as the DoD’s determination of effect.

The P-102 Harmon Power Upgrade Project encompasses construction activities and associated efforts for utilities upgrades extending from the existing Harmon Substation to the AAFB Main Station in addition to a proposed green waste area and two construction laydown areas. The proposed green waste area and construction laydown areas are additions to the original project design outlined in PA Memo # 1, dated November 14, 2014.

Three areas are now added for this REVISED APE (construction equipment and green waste laydown areas). These areas were within cultural resource surveys noted in the prior PA Memo and have no historic properties within 100 meters of their locations. As discussed with the SHPO archaeologist (meeting 3-28-2017) only the 3 new areas were to be addressed, as there had been prior concurrence by SHPO (letter dated December 17, 2014) that the road corridor researched in

1 The posting of this PA Memo on the Cultural Resources Information (CRI) website is required by Stipulation IV.E.2. of the 2011 Military Relocation PA as a means for interested members of the public to provide comments on the identification and evaluation of historic properties. Confidentiality requirements under the Archaeological Resources Protection Act (ARPA) and National Historic Preservation Act (NHPA) prohibit federal agencies from publicly disclosing the exact nature and location of archaeological sites and other types of historic properties such as traditional cultural properties (TCPs).

the prior PA Memo would have no historic properties affected, and thus need not be reviewed again.

This project encompasses construction and associated efforts for the Harmon Power Upgrade between the existing Harmon Substation located near the intersection of Routes 1 and 3 to the main station at Andersen Air Force Base (AAFB), primarily within existing easements and right of ways along Routes 3 and 9. This is a REVISED Programmatic Agreement Memo (PAM) #1 now adding three areas (two contractor equipment laydown areas, and one green waste area). Although located within what is today known as the villages or municipalities of Dededo and Yigo, the pre-World War II names for the areas within or closest to the area of potential effects (APE) include Ukudu, Taguac, Haputo, Finaguayac, Astobias and Chaguian.

The requirement for utilities upgrades to existing Guam infrastructure was identified in the 2010 Final EIS (FEIS) for the military relocation to Guam and CNMI and Appendix E of the 2011 Programmatic Agreement among the Department of Defense, the Advisory Council on Historic Preservation, the Guam State Historic Preservation Officer, and the Commonwealth of the Northern Mariana Islands State Historic Preservation Officer Regarding the Military Relocation to the Islands of Guam and Tinian (the Undertaking). Accordingly, this memo presents information to allow the State Historic Preservation Officer (SHPO) to provide comments on the DoD's identification and evaluation of historic properties within the project's APE, as well as the DoD's determination of effect.

### **PROJECT LOCATION**

The P-102 Project area is situated on the limestone plateau located above the western cliffs of northern Guam. The plateau ranges from 120 to 150 meters (400 to 500 feet) above mean sea level and is relatively flat. However, the topography is characterized by localized undulations of raised and depressed areas caused by the differential solution of the subsurface limestone bedrock.

The P-102 Project is located within the modern villages, or municipalities, of Dededo and Yigo. The P-102 Project APE is a 25 foot wide corridor located within existing easements along Marianas Boulevard, Andersen AFB road, Route 9, and Route 3 in addition to one proposed green waste area and two proposed construction laydown areas (Figure 1).

The total revised APE for P-102 is now 54.99 hectares (135.88 acres).

### **PROJECT DESCRIPTION**

MILCON P-102 Project centers upon the installation of a new 34.5 kV (kilovolt) electrical transmission line to increase the capacity and reliability of the existing electrical utility infrastructure. Upgrades are required due to increased personnel, facilities, and operations associated with the relocation of US Marine Corps (USMC) ground and aviation unit personnel as

- 2 | The posting of this PA Memo on the Cultural Resources Information (CRI) website is required by Stipulation IV.E.2. of the 2011 Military Relocation PA as a means for interested members of the public to provide comments on the identification and evaluation of historic properties. Confidentiality requirements under the Archaeological Resources Protection Act (ARPA) and National Historic Preservation Act (NHPA) prohibit federal agencies from publicly disclosing the exact nature and location of archaeological sites and other types of historic properties such as traditional cultural properties (TCPs).

well as activities from Okinawa to the Naval Communications Telecommunication Station (NCTS) at Finegayan and Air Combat Element (ACE) area at AAFB. The transmission line will be encased in new pre-cast utility vaults and concrete duct banks that will extend from the Harmon Substation and the forthcoming North Finegayan Substation and from the impending North Finegayan Substation to the AAFB Main Station.

Ground disturbing activities required prior to installation of the transmission line will include: clearing and grubbing of vegetation to facilitate access to the project site; grading and leveling the landscape; munitions and explosives of concern (MEC) clearance; placement of survey markers (wooden stake hubs and/or rebar) for topography support, and; intrusive design studies such as geotechnical boring.

Generally, geotechnical work entails drilling borings with a truck-mounted drill rig using 8-inch diameter augers or pipe casing with water or air rotary drilling. Boring depths for the P-102 Project are anticipated to range from five to 50 feet below surface. Additionally, backhoe test pits up to three feet wide and 12 feet long may be excavated in some areas to depths ranging from three to eight feet below surface. Soil, sediment, and rock samples will be collected from borings and test pits for laboratory analyses. Following sampling completion, borings will be filled with grout and test pits will be backfilled with the leftover excavated material.

Additional ground disturbing activities associated with the P-102 Project will consist of trenching, horizontal directional drilling, micro-tunneling, and/or cut and fill. As well as: the installation of a temporary construction fence; aluminum and fiber optic cables; circuit breakers; associated protective devices; cable terminations and splices; and, conduits and manholes along the route between Harmon and AAFB stations. Further project works will also include: stockpiling of green waste; erosion and sediment control; site improvements such as paving and landscaping, and; where necessary, the restoration of roadways, sidewalks, curbs and gutters, and traffic signs.

## **IDENTIFICATION OF HISTORIC PROPERTIES**

### **Scope of DoD Identification Efforts**

In planning for the Undertaking, the Department of Defense (DoD) first conducted a data gap analysis to determine the need for supplemental identification and evaluation surveys and then conducted those surveys. In consultation with the Guam SHPO, Advisory Council on Historic Preservation (ACHP), National Park Service (NPS) and Concurring Parties to the 2011 Programmatic Agreement (2011 PA), the DoD has applied the results of those identification efforts to the siting/lay down of individual projects in order to avoid and minimize effects to historic properties to the extent practical. DoD has provided documentation of these efforts to the Signatories and Invited Signatories via Appendices D and E of the 2011 PA.

- 3** The posting of this PA Memo on the Cultural Resources Information (CRI) website is required by Stipulation IV.E.2. of the 2011 Military Relocation PA as a means for interested members of the public to provide comments on the identification and evaluation of historic properties. Confidentiality requirements under the Archaeological Resources Protection Act (ARPA) and National Historic Preservation Act (NHPA) prohibit federal agencies from publicly disclosing the exact nature and location of archaeological sites and other types of historic properties such as traditional cultural properties (TCPs).

DoD surveys and evaluations have focused on project-specific APEs, defined consistent with 36 CFR §800.16(d) to include those portions of the island of Guam subject to direct and indirect effects of projects included in the Undertaking, based on the July 2010 Final Environmental Impact Statement (FEIS) for the Guam and CNMI Military Relocation.

In addition to the archaeological and architectural surveys and evaluations, DoD has completed extensive archival research and oral history studies and interviews to identify traditional cultural properties, places, sacred sites, and culturally important natural resources such as the *nunu*, *da'ok*, *dokdok*, and *ifit* trees, and medicinal plants.

More specifically, most of the P-102 APE has been subject to one or more of the historic property identification efforts listed in 36 CFR §800.4(b)(1), which may include background research, consultation, oral history interviews, sample field investigation and field survey. As such, results of identification and evaluation efforts for the P-102 APE can be found in the following original studies of cultural and/or historic resources. The APE does not affect any eligible historic properties.

In the prior PA Memo #1, the SHPO concurred that the road corridor would have no historic properties affected (PA Memo was delivered November 14, 2014 to the SHPO and the SHPO letter of concurrence was dated December 17, 2014). Therefore, only the 3 new areas for contractor laydown and green waste were reviewed for this PA Memo revision. These 3 areas were covered by cultural resource surveys noted in the prior PA Memo and have no historic properties within 100 meters of their locations.

Athens, J.S.

2009 *Final Archaeological Surveys and Cultural Resources Studies on Guam and the Commonwealth of the Northern Mariana Islands in Support of the Joint Guam Build-Up Environmental Impact Statement Volume I: Guam*. Prepared by International Archaeological Research Institute, Inc. Honolulu, HI.

Davis, R.

1983 *Andersen Air Force Base Central Compound Reconnaissance Survey*. Letter report prepared by Department of Parks and Recreation, Government of Guam, Agana.

DeFant, David

2013 *Final Report Cultural Survey at Five Sites, Joint Region Marianas, Guam*. Prepared by Prepared by the Naval Facilities Engineering Command, Pacific by Southeastern Archaeological Research, Inc.

Dixon, Boyd and S. Walker

2011 *Final Cultural Resources Investigations Conducted in the Territory of Guam Supporting the*

- 
- 4 | The posting of this PA Memo on the Cultural Resources Information (CRI) website is required by Stipulation IV.E.2. of the 2011 Military Relocation PA as a means for interested members of the public to provide comments on the identification and evaluation of historic properties. Confidentiality requirements under the Archaeological Resources Protection Act (ARPA) and National Historic Preservation Act (NHPA) prohibit federal agencies from publicly disclosing the exact nature and location of archaeological sites and other types of historic properties such as traditional cultural properties (TCPs).

*Joint Guam Build-Up Environmental Impact Statement. Archaeological Surveys on Guam at Proposed Utility Sites, Harmon Annex and Andersen AFB.* Prepared by the Naval Facilities Engineering Command, Pacific Division, by TEC Inc.

Dixon, Boyd, S. Walker and R. Schaefer

2011 *Final Report Cultural Resource Investigations Conducted in the Territory of Guam Supporting the Joint Guam Build-Up Environmental Impact Statement: Final Archaeological Surveys on Guam 2010 on Andersen AFB.* Prepared by the Naval Facilities Engineering Command, Pacific Division, by TEC Inc.

Dixon, Boyd, et al.

2014 *Draft Proposed Guam and CNMI Military Relocation 2012 Roadmap Adjustments SEIS Live-Fire Training Range Complex Range Footprints, Main Cantonment, Utilities, Communications, Well Field Alternatives and Access Route Options Volume I: Potential Direct Impact Area In-Fill Cultural Resources Study Narrative.* Prepared for Joint Guam Program Office Washington, D.C. under Contract Number N62742-11-D-1801 Delivery Order No: 007 to TEC, Inc., Honolulu, Hawaii.

Kurashina, H., D. Wooster, T. McGrath, and J. Toenjes

1988 *Archaeological Investigations of the Route 3 Road Corridor, Territory of Guam, Mariana Islands.* Prepared for Juan C. Tonorio and Associates, Inc., Agana, Guam.

Tuggle, H.D.

1993 *Small and Developed Parcel Survey Areas.* Pages 35-42 in *The Archaeology of Orote Peninsula: Phase I and II Archaeological Survey of Areas Proposed for Projects to Accommodate Relocation of Navy Activities from the Philippines to Guam, Mariana Islands.* Prepared for Belt Collins and Associates by International Archaeological Research Institute, Inc., Honolulu, HI.

Welch, D.

2010 *Final Archaeological Surveys and Cultural Resources Studies Conducted in 2007 on the Island of Guam in Support of the Joint Guam Build-Up Environmental Impact Statement; Volume I: Narrative and Volume II: Site Descriptions.* Prepared for Department of the Navy, Naval Facilities Engineering Command, Pacific, Pearl Harbor, Hawaii under Contract N62742-06-D-1870, Task Order 10 to TEC, Inc.

Yee, Sandra L., David J. Welch and Jane Allen

2004 *Final Archaeological Overview Survey Report for Andersen Air Force Base, Guam.* Prepared by International Archaeological Research Institute, Inc. under Contract F41624-01-D- 8597 /0061 to Earth TEC, Inc., Colton, CA.

- 
- 5 The posting of this PA Memo on the Cultural Resources Information (CRI) website is required by Stipulation IV.E.2. of the 2011 Military Relocation PA as a means for interested members of the public to provide comments on the identification and evaluation of historic properties. Confidentiality requirements under the Archaeological Resources Protection Act (ARPA) and National Historic Preservation Act (NHPA) prohibit federal agencies from publicly disclosing the exact nature and location of archaeological sites and other types of historic properties such as traditional cultural properties (TCPs).

Yoklavich, A., J. Craib, and P. Drolet

1996 *Final Report: Cultural Resource Management Overview Survey, Andersen Air Force Base, Mariana Islands, Territory of Guam*. Prepared for Department of the Navy, Pacific Division, Facilities Engineering Command under Contract N62742-91-D-0507, Delivery Order No. 0005 to Ogden Environmental and Energy Services Co., Inc., Honolulu, HI.

**DETERMINATION OF ELIGIBILITY**

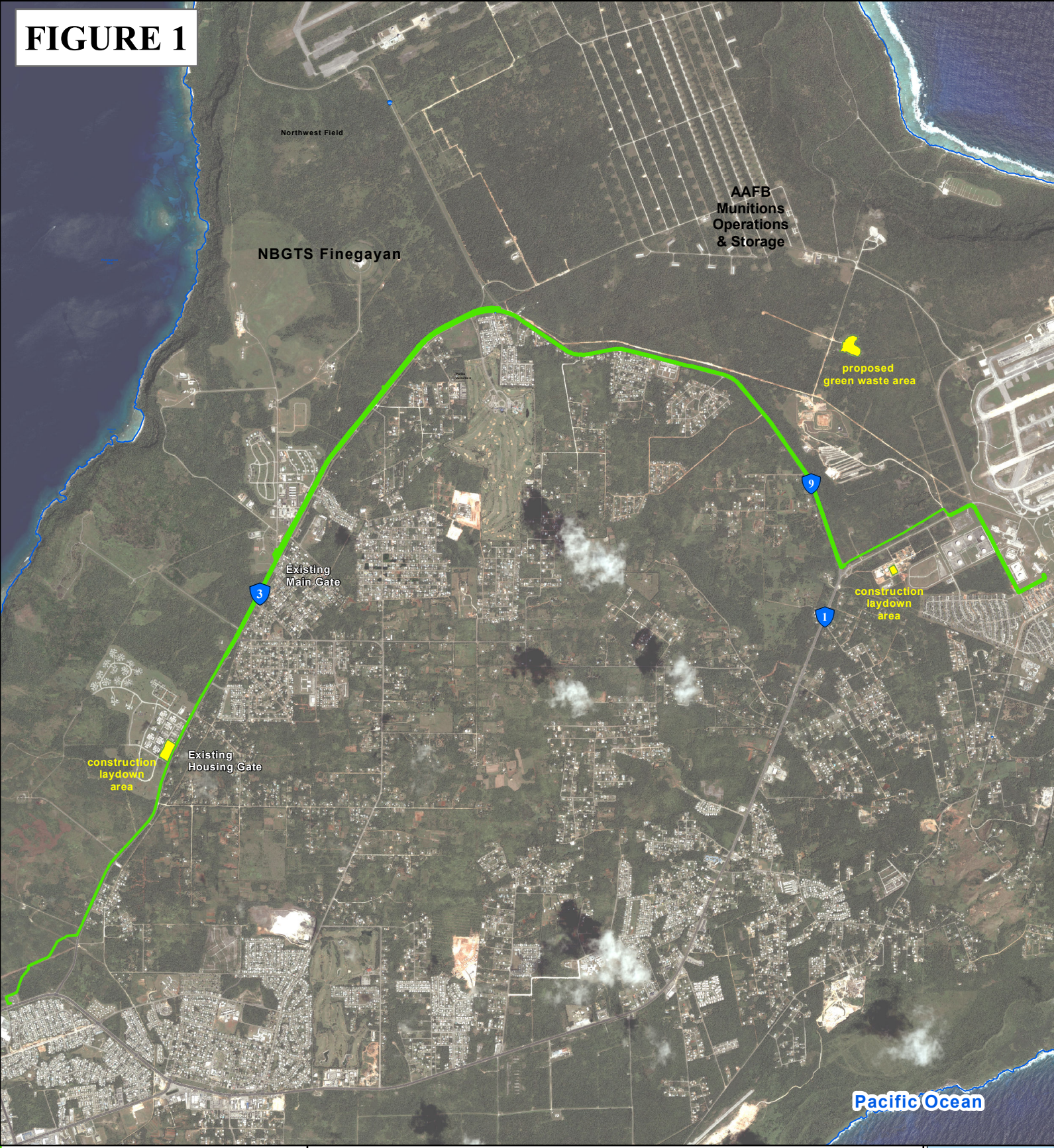
Pending input from consulting parties and the public, the DoD has determined that there are no known historic properties within the P-102 REVISED APE.

**DETERMINATION OF EFFECT:**

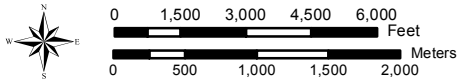
The DoD determination for the P-102 project is no historic properties affected.

- 
- 6 | The posting of this PA Memo on the Cultural Resources Information (CRI) website is required by Stipulation IV.E.2. of the 2011 Military Relocation PA as a means for interested members of the public to provide comments on the identification and evaluation of historic properties. Confidentiality requirements under the Archaeological Resources Protection Act (ARPA) and National Historic Preservation Act (NHPA) prohibit federal agencies from publicly disclosing the exact nature and location of archaeological sites and other types of historic properties such as traditional cultural properties (TCPs).

**FIGURE 1**





**P-102  
Harmon Power Upgrade**



Coordinate System: UTM Zone 55 North  
Projection: Transverse Mercator  
Datum: D WGS 84

**Harmon Power Upgrade  
Harmon Substation to AAFB Main Station**

-  APE for Harmon Power Upgrade - REVISED  
(Harmon Substation to AAFB Main Station, 135.88 acres)
-  3 new laydown areas for this revised APE

